

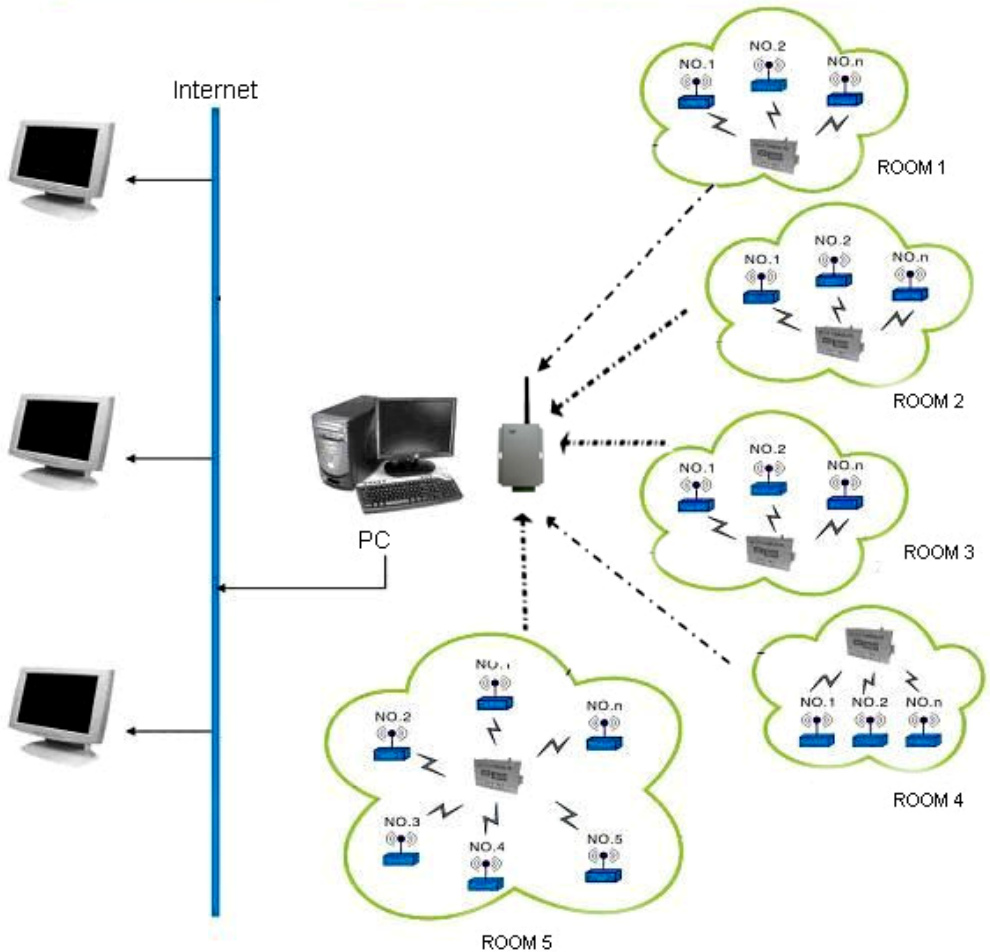
# TMP wireless data logging system



# TMP- Intelligent Wireless Data Logging Network

## --Temperature & Humidity Monitor Solution

TMP Temperature Monitor System



# TMP– Intelligent Wireless Data Logging Network

--Temperature & Humidity Monitor Solution

TMP wireless logging network is an essential hardware and software solution that can empower any organization to control distributed networks from a single location, using the Zigbee wireless network.



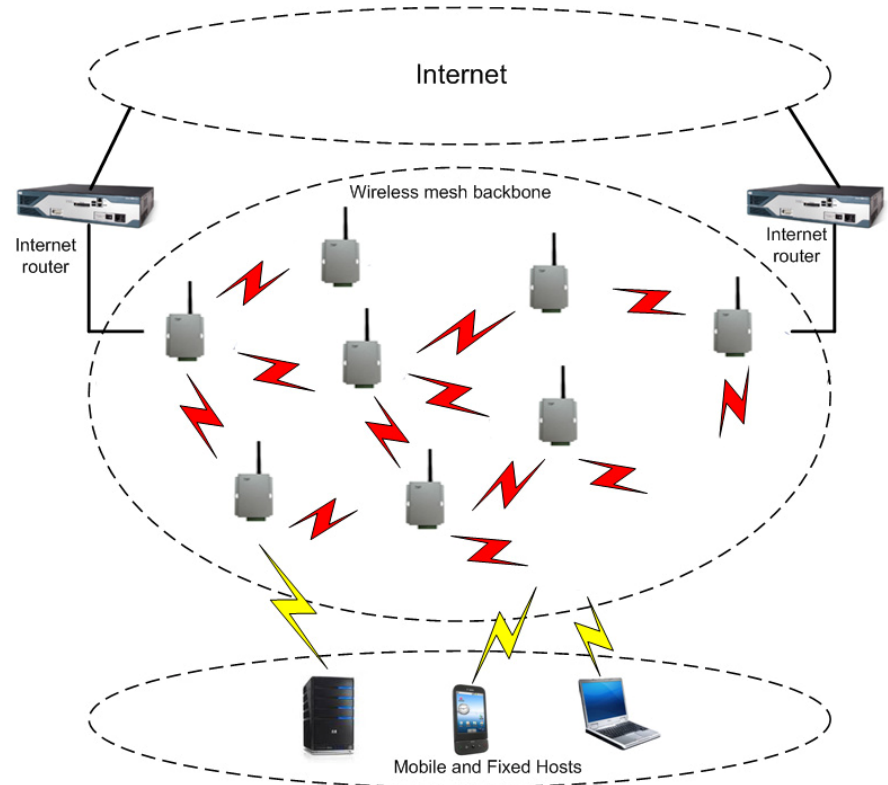
# TMP – Specifications

- 2.4GHz license-free frequency RF band
- 16-bit resolution data logging system
- 2 universal inputs for external sensors:  
PT-100, thermocouple, 0-1V, 0-50mV, 4-20mA,  
contact, frequency and pulse counter
- Storing up to 60,000 samples



# TMP wireless data logging system – Key features

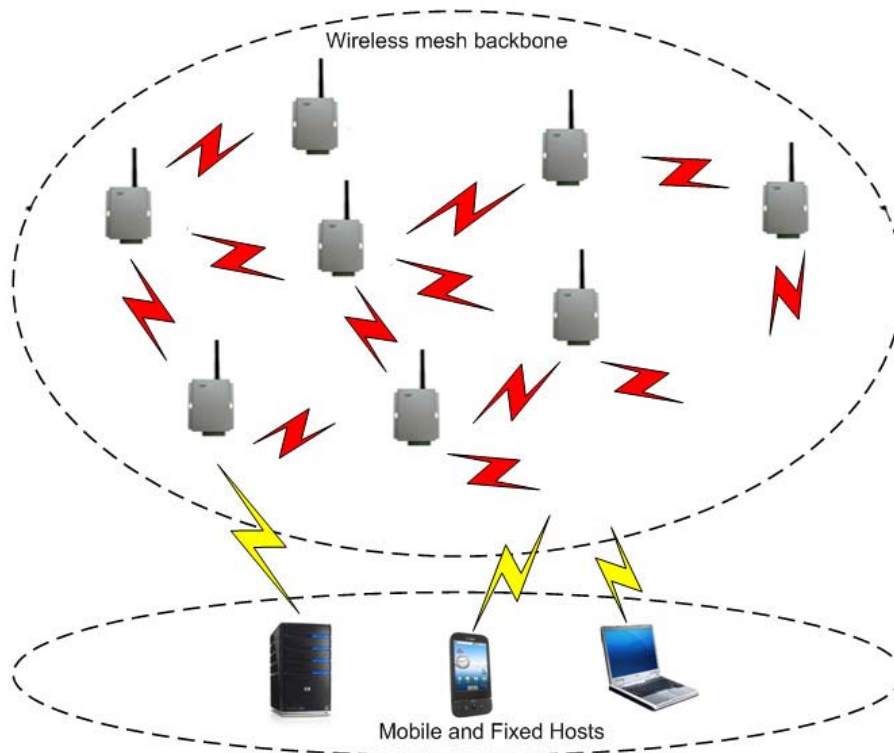
- Wireless data logging with no data loss
- Up to 65,000 network units for long-range monitoring
- Operating keypads
- Worldwide license-free RF band
- Wide range of recording
- Creates a network automatically
- Selects the least noisy channel
- Self-routing correction
- Low power consumption



# TMP Network : ZigBee Telemetry Protocol

- ZigBee wireless 2.4GHz license-free frequency RF band
- Units can serve as transmission repeaters to neighboring units
- Creating a reliable mesh network of up to 65,000 nodes
- Zigbee Advantages:
  - Reliable transmission, ensuring no data loss
  - Transmission range can be constantly expanded by adding nodes
  - Minimal costs due to wire-free infrastructure
  - Portable units facilitating easy deployment in various environments such as hospitals, pharmaceutical, food etc.
- Low power consumption

# TMP Network : Units and Distances



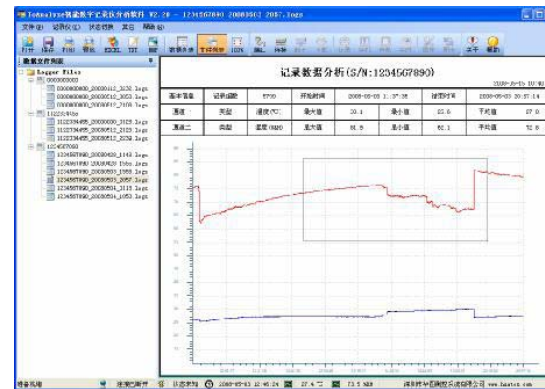
## Number of units:

- Receiver can connect up to 8 loggers and up to 16 repeaters
- Repeater can connect up to 24 loggers and 16 additional Repeaters (one is the father Repeater / Receiver)
- Line of sight distances:
  - Repeater to Repeater up to – 800m
  - Repeater to Loggers up to – 80m
- Maximum 65,536 units in one network

Distances are for line-of-sight

# Software Features

- Multiple data display:  
Numeric, meter, or graph
- On-line collected data retrieval and display in real-time
- Map view displays all loggers' location
- New sensor definition
- Ability to read the defined sensor's units on the logger's display





# Software Features

- **Data View:**
  - Real-time data in multiple displays
- **Alarm:**
  - Alarm level setup with email and SMS notifications
  - Four alarm levels, allowing for programming of 4 separate parameters, with alarm delay and duration
- **Analysis:**
  - Dew point analysis, FO Pasteurization, histogram, statistics with export to Excel and CSV formats
- **Setup:**
  - Logger setup with Celsius or Fahrenheit view

# TMP Wireless Monitoring System Advantages

- **TMP wireless monitoring system** is a mesh network, hence the ability to connect up to 65,000 units, in effect a practically limitless scalable system
- **2.4 GHz** does not need any local license so can be sold worldwide without licensing issues
- **TMP wireless monitoring system** has **rechargeable batteries**, convenient and bringing significant cost and time savings
- **Reports, Web, GSM** are included in the software and do not need to be purchased separately
- **Alarms to mobile phone** and by **email**

# Applications

- **TMP wireless monitoring system** offers a broad selection of logger models meeting a wide variety of industry applications needs:
- **Storage**
- **Hospitals**
- **Pharmaceuticals**
- **And more**



**Thanks !**